



1963  
**TIGER'S DEN**



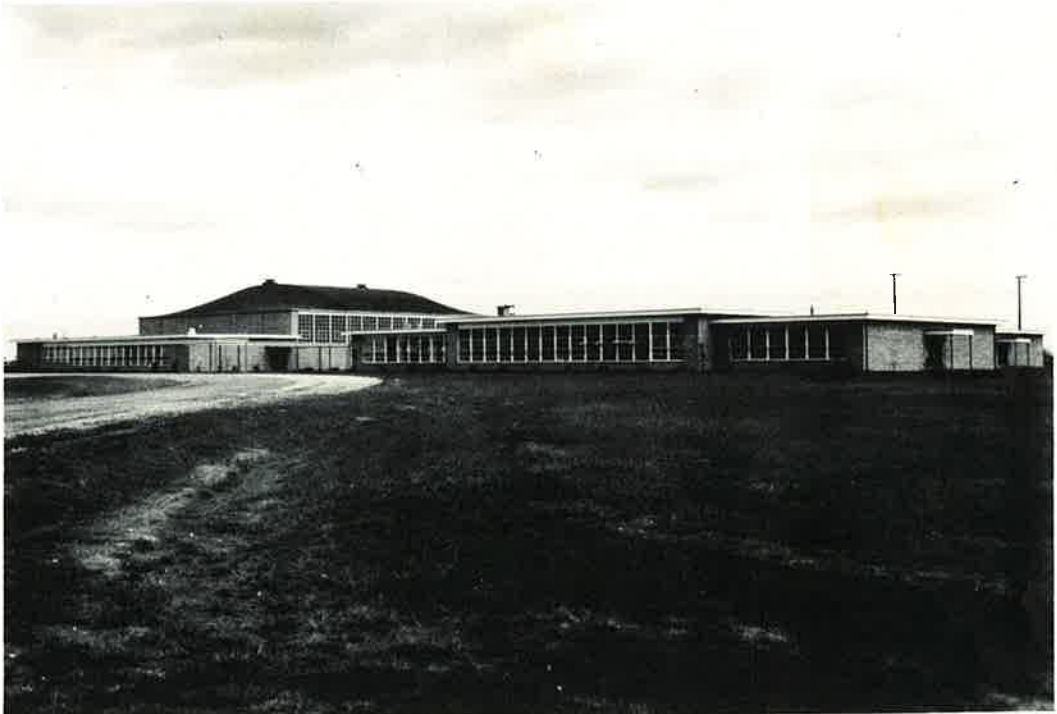








# MARK TWAIN HIGH'S



## 4TH ANNUAL TIGER'S DEN

We, the Seniors of Mark Twain High School, are proud to be the fourth annual graduating class of their newly reorganized district. We hope the future class will enjoy the four years of high school as we have.



# YEARBOOK QUEEN



BARBARA ERB



DOROTHEA MILLER  
First Attendant  
Junior



SHARON LEWELLEN  
Second Attendant  
Sophomore



POLLY PRICE  
Third Attendant  
Freshman









SENIORS  
Donald Walton, Barbara Erb, Wallace Mills



JUNIORS  
Mike English, Dorothea Miller, Johnny  
Mac Liter.



SOPHOMORES  
Don Brashears, Sharon Lewellen, Wes  
Woollen.

FRESHMEN  
John Croll, Polly Price, Sam Fry.





# DEDICATION





# DEDICATION



To you, Mrs. Fanning, the class of 1963, dedicates this Tiger's Den as a token of appreciation for your many years of service to this community.

You have not only given us the key to a better understanding of our language and its literature, but have also been a guiding light by which we can fashion our lives. Long after we leave the halls of Mark Twain High School we will remember your untiring patience and your genuine concern for each one of us.



# BOARD OF EDUCATION



Fred Gould  
President



W. E. Lane  
Vice-President



R. E. Allen  
Secretary



Wm. B. Cragen  
Treasurer



Jess Ely  
Member



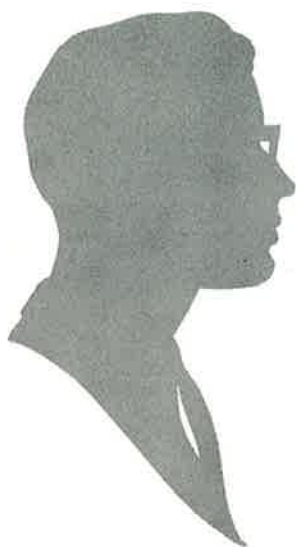
H. E. Harris  
Member



Mr. Grey  
Supt. of Schools



# ADMINISTRATION





REMEL STERLING GREY

A.B. Tarkio College  
M.A. George Peabody College  
Nashville, Tennessee

Superintendent

To the class of 1963:

I would like to congratulate you on your achievements this year. I have enjoyed working with you this year and I think I speak for the entire faculty when I say this class has been my cooperative. We do not want you to let this be the end of your education, but just one of the plateaus in your young life on the road to more education.

Sincerely,

*Remel S. Grey*

Mr. Grey





NELS WILLIAM JOESTING

A.B. and B.S.  
Tarkio College

Principal  
American History



MARY BELLE FANNING

B.S. in Education  
K.S.T.C.

English  
Citizenship

FRANCIS E. TEMPELMAN

B.S. and M.A.  
K.S.T.C.

Typing  
Shorthand  
Bookkeeping  
Office Machines  
Clerical Practice





DONALD S. BRYANT

B.S. in Education  
K. S. T. C.

English  
Speech  
Dramatics



MRS. SHIRLEY FISHBACK

A.A. William Woods College  
B.S. University of Maryland

Vocational Home Economics



DAVID GREEN

B. M. E.  
Central Methodist College

Instrumental Music



FRED J. GRIMES

B.S. of Ed. -M. of Ed.  
University of Missouri

P. E.  
Math.  
Driver Ed.  
Trans. Sup.



MRS. LYLE R. LANNING

B.S. in Education  
University of North Dakota

Vocal Music I-XII



LOU MOSS

B.S. K.S.T.C.  
M.A. K.S.T.C.

Counseling  
Football

LESTER PETERS

B.S. in Education  
K.S.T.C.

P.E.  
American History



JUDY REKER

B.S. in Education  
University of Missouri

English II  
American History



JAMES H. REYNOLDS

B.S. in Education  
K.S.T.C.

Basketball  
Industrial Arts  
Assistant Football  
Assistant Track



DONALD O. ROGERS

B.S. in Education  
S.W. Missouri State College

French  
Elementary French



JEANNINE ROGERS

B.A.  
Harding College

Art  
Elementary Art



WILLIAM T. SLAVIN

B.S. in Education  
K.S.T.C.

Advanced Algebra  
Biology  
Trigonometry  
Physics  
Chemistry



JOHN H. VILLEME

B.S. in Education  
Central Missouri State College

Algebra I  
Plane Geometry  
Biology  
General Science



MERLE G. WENNEKER

B.S. in Agriculture  
University of Missouri

Vocational Agriculture I, II, III, IV

MRS. VIRGINIA WILLIS

B.S. in Education  
K.S.T.C.

Librarian



RHEUBY WOODROW

A.E.  
Hannibal LaGrange  
B.S. in Education  
K.S.T.C.

Citizenship  
World History

## PERSONNEL



MRS. BILLY RAY  
Secretary to Superintendent



MRS. MARY ENGLISH  
Secretary to Principal

## CUSTODIANS



MR. AND MRS. CALDWELL



## COOKS



Mrs. Egbert, Mrs. Dowell, Mrs. Elliott, and Mrs. Fisher.

## BUS DRIVERS



ROW ONE: Mr. Crutchlow, Mr. Logan, Mr. Swank, Mr. Yager, Mr. Ulry, Mr. Scobee. ROW TWO: Mr. Bridgeman, Mr. Meyer, Mr. Wichern, Mr. Robinson, Mr. Livers, Mr. Hill. ROW THREE: Mr. Ford, Mr. Boss, Mr. Kerns, Mr. Tapley. NOT SHOWN: Mrs. Couch.



JOHN CROCKETT  
Editor



JANE BIRD  
Co-Editor

JERRY HILDEBRAND  
Business Manger



JOYCE FUQUA  
Humor Editor

SHARALYN NOLAND  
Sports Editor



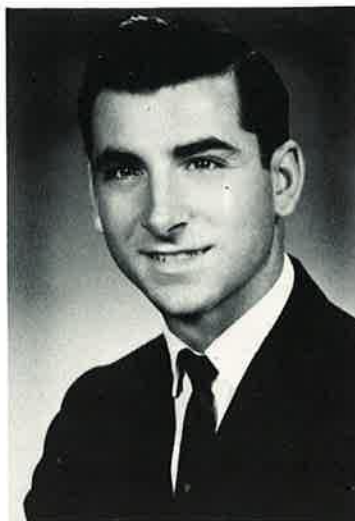
# SENIORS







TOM ASQUITH



JIM BERRY

Track . . . . . 2



JANE BIRD

F.H.A. . . . .	2, 3, 4
Chorus . . . . .	1, 3
Annual Staff . . . . .	4
Dramatics . . . . .	4
Pep Club. . . . .	2



CAROL BLACK

F.H.A. . . . . 1, 2, 3, 4  
 Pep Club . . . . . 2  
 Librarian . . . . . 2



GOLDIE BLOOMFIELD

F.H.A. . . . . 1, 2, 3, 4  
 Pep Squad . . . . . 3, 4



JAMES M. BOLING

F.H.A. . . . . 2, 3, 4  
 Chorus . . . . . 1, 2, 3, 4





TOM BRAMBLETT

Chorus . . . . . 1  
 Football . . . . . 2, 3



MELVIN BRASHEARS

Basketball . . . . . 1, 2, 3, 4  
 Track . . . . . 1, 2, 3, 4  
 Band . . . . . 1, 2, 3, 4  
 Football . . . . . 2, 3, 4  
 M. T. Club . . . . . 3, 4  
 Student Council President . 4  
 Band Officer . . . . . 2  
 Volleyball . . . . . 1



BETTY BURNS

Latin Club . . . . . 1  
 G. A. A. . . . . 1, 2  
 Chorus . . . . . 2  
 Pep Club . . . . . 3  
 Dramatics . . . . . 3  
 Class Secretary . . . . . 2  
 Class Reporter . . . . . 2  
 Junior Class Play . . . . . 3





# RONALD M. CARVER

F.F.A. . . . . 1, 2, 3  
 F.F.A. Treasurer . . . . 3  
 Class Treasurer . . . . 3  
 F.F.A. District Public  
 Speaking Contest at  
 Kirksville. . . . . 3  
 Representative of F.F.A.  
 at Co-op Camp . . . . 1  
 Sophomore Pilgrimage . . 2



# WAYNE CHANDLER

F.F.A. . . . . 1, 2  
 Student Council . . . . 3  
 F.F.A. Parliamentarian . 2



# JEANIE CHIPMAN

Pep Club. . . . . 3  
 Cheerleader . . . . . 2, 4  
 Band . . . . . 1, 2, 3, 4  
 F.H.A. . . . . 1, 2, 3, 4





### LYNN CLAYTON

Chorus . . . . .	1, 2
Band . . . . .	3, 4
F. H. A. . . . .	2, 3, 4
Pep Club . . . . .	2, 3, 4
Pep Club President . . . . .	3
Majorette . . . . .	4
Dramatics . . . . .	4



### JOHN PHILLIP CONN

Band . . . . .	1, 2
Class Reporter . . . . .	1



### JOHN CROCKETT

Basketball . . . . .	1, 2, 3, 4
Track . . . . .	1, 2, 3, 4
Volleyball . . . . .	1
M. T. Club . . . . .	3, 4
Annual Staff . . . . .	4
Class President . . . . .	3
Class Secretary . . . . .	2
Class Treasurer . . . . .	1
French Club . . . . .	3
Band . . . . .	1, 2
Band Secretary . . . . .	1, 2



CAROL DICKENSHEETS

Chorus . . . . . 1, 2, 3, 4  
Dramatics . . . . . 3



LARRY DOWELL

Chorus . . . . . 1



RICHARD ELLIOT







DONNA K. EPPERSON

F.H.A. . . . . 2, 3, 4  
 Chorus . . . . . 1, 2, 4  
 Pep Club. . . . . 2



BARBARA RUTH ERB

Pep Squad . . . . . 1, 2, 3, 4  
 Pep Squad, Vice-President . 4  
 French Club President . . 3  
 F.H.A. . . . . 1, 2, 3, 4  
 Band . . . . . 1, 2, 3, 4  
 Candidate For Homecoming  
 Queen . . . . . 3



JIM FISHER

Track . . . . . 3



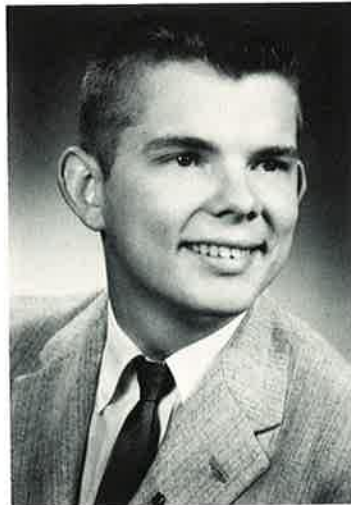
# JOYCE RUTH FUQUA

Chorus . . . . . 1, 4  
 Band . . . . . 1, 2  
 Student Council Sec. . . . . 4  
 Cheerleader . . . . . 3  
 Pep Club . . . . . 2, 4  
 F.H.A. . . . . 3, 4  
 Homecoming Queen Candidate  
 4  
 Annual Staff . . . . . 4  
 Commencement Attendant . 3  
 Dramatics . . . . . 4  
 Girls Sextet . . . . . 4  
 Pep Band . . . . . 1, 2



# JUNIOR GILLENWATER

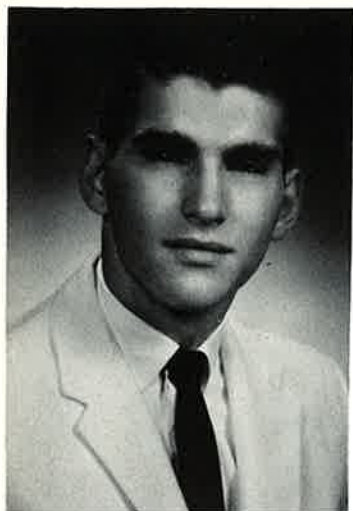
Basketball . . . . . 1  
 Volleyball . . . . . 1  
 Track . . . . . 1



# LESLIE HARLOW

Basketball . . . . . 1  
 Track . . . . . 1  
 Chorus . . . . . 1, 2, 3, 4  
 Class Treasurer. . . . . 1





WALLACE HART

Chorus	. . . . .	1
F.F.A.	. . . . .	2, 3, 4



JERRY HILDEBRAND

Football	. . . . .	2
Music	. . . . .	1
Annual Staff	. . . . .	4



NEIL JACKSON

F.F.A.	. . . . .	2
Chorus	. . . . .	1





# SHIRLEY JENNINGS

F.H.A. . . . . 4  
 Dramatics . . . . . 3  
 Chorus . . . . . 1, 2, 3  
 Pep Club. . . . . 2



# MIKE JOHNSON

Football . . . . . 2  
 Volleyball . . . . . 1  
 Track . . . . . 2, 3, 4  
 Band . . . . . 1, 2, 4  
 Band Vice-President . . . 2  
 M.T. Club . . . . . 3, 4  
 M.T. Club Vice-President . 4  
 French Club . . . . . 3, 4  
 French Club Vice-  
 President . . . . . 3  
 Student Council . . . . . 3



# ANNA LEE KEITHLY

Chorus . . . . . 1, 3, 4  
 Pep Club. . . . . 2, 3





MARGARET ANN KOSIN

Chorus. . . . . 1, 2, 4  
 Sophomore Pilgrimage . . . 2



ALAN LAIRD

F.F.A. . . . . 2, 3, 4  
 Chorus . . . . . 1



SAMMY LEAKE

Chorus. . . . . 1  
 Class Vice-President. . . 1  
 Class Secretary. . . . 3, 4



# JOYCE MARILYN LOVE

Egyptian Music Camp . . . 1  
 Chorus . . . . . 1  
 Band . . . . . 1, 2, 3, 4  
 Majorette . . . . . 4  
 Best Dressed Junior Girl . 3  
 Clarinet Quartet . . . . 2, 3  
 Pep Club. . . . . 2, 3, 4  
 F.H.A. . . . . 3, 4  
 Perfect Attendance Award . 1  
 All Conference Band . . . 3



# ANN MAHOOD



# LINDA McINTIRE

Pep Club. . . . . 3





WALLACE MILLS

Basketball . . . . .	1, 2, 3, 4
Track . . . . .	1, 2, 3, 4
Football . . . . .	3, 4
Football Tri-Captain . . . . .	4
M. T. Club . . . . .	3, 4
Class President . . . . .	2



JOHN MOSELEY

Basketball . . . . .	2
Football . . . . .	2, 3, 4
Track . . . . .	3, 4
Student Council . . . . .	2
Class President . . . . .	1
Class Reporter . . . . .	4
M. T. Club . . . . .	3, 4
Dramatics . . . . .	3
Volleyball . . . . .	1



DAVID MUNDLE

F. F. A. . . . .	1, 2, 3, 4
Chorus . . . . .	1, 3, 4





SHARALYN LEE NOLAND

Basketball . . . . . 1  
 Band . . . . . 1  
 Mixed Chorus . . . . . 1  
 Girls Glee Club. . . . . 1  
 Pep Club. . . . . 3, 4  
 Pep Club Secretary . . . . 4  
 Annual Staff . . . . . 4



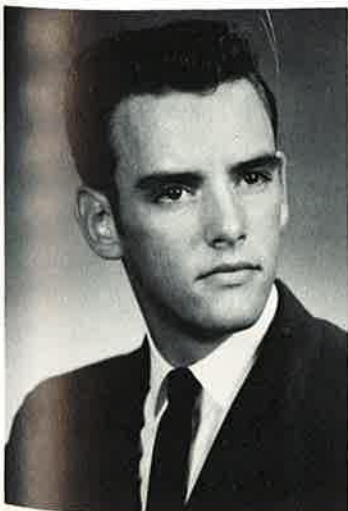
LINDA NORTHCUTT

Pep Club. . . . . 2, 3, 4  
 F.H.A. . . . . 2, 3, 4  
 F.H.A. Reporter . . . . . 3  
 F.H.A. Vice-President . . . 4  
 Band . . . . . 1, 2, 3, 4  
 Mixed Chorus . . . . . 1  
 Girls Glee Club. . . . . 1  
 Dramatics . . . . . 4  
 Oratorical Contest . . . . 4  
 Pep Band . . . . . 1, 2, 3



CHESTER ALLEN PALMER

Class President . . . . . 1, 4  
 Class Vice-President . . . . 3  
 Basketball . . . . . 1, 2, 3, 4  
 M. T. Club. . . . . 4  
 Track . . . . . 1  
 Chorus . . . . . 1  
 F. F. A. . . . . 2, 3, 4  
 Student Council. . . . . 4





GEORGIANN PIANFETTI

Chorus . . . . . 1, 2



BILL POWELL

Football . . . . . 2, 3, 4  
 Basketball . . . . . 2, 3, 4  
 Track . . . . . 2, 3, 4  
 Volleyball . . . . . 1  
 M. T. Club . . . . . 3, 4  
 French Club . . . . . 3  
 Class Vice-President . . 1, 4  
 Student Council . . . . . 2



LARRY RECORD

Football . . . . . 2, 3, 4  
 Basketball . . . . . 2  
 Track . . . . . 2, 3  
 M. T. Club . . . . . 3, 4  
 Band . . . . . 1  
 Senior Class Treasurer . . 4



# PHYLLIS REYNOLDS

Pep Club Vice-President . 3  
Pep Club . . . . . 1, 2, 3, 4  
F.H.A. . . . . 1, 2, 3, 4  
Chorus . . . . . 1, 2, 3, 4  
Sextet . . . . . 2, 4  
All Conference Chorus. . . 3



# MARY CAYE RICE

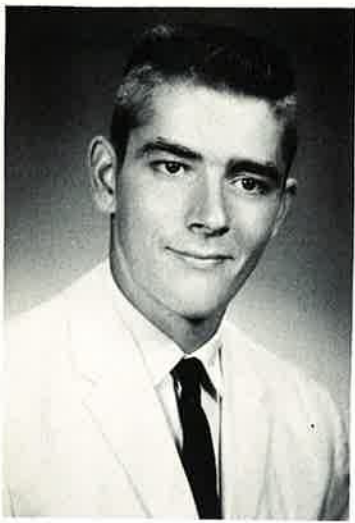
Band . . . . . 1, 2, 3, 4  
Majorette . . . . . 1, 2, 3, 4  
Pep Club. . . . . 1, 2, 3, 4  
F.H.A. . . . . 1, 4  
Latin Club . . . . . 1, 4  
Drama Club . . . . . 2  
Thespians . . . . . 3  
Junior Play . . . . . 3  
Future Teachers . . . . . 3  
Annual Staff . . . . . 2  
Newspaper Staff . . . . . 2  
Pep Band . . . . . 1  
Dance Band . . . . . 2  
Chorus . . . . . 3, 4  
Girls Sextet . . . . . 4



# EILEENE ROHNING

Pep Club. . . . . 2, 3, 4  
F.H.A. . . . . 1, 2, 3, 4  
Homecoming Candidate . 3, 4  
Homecoming Attendant . . 4





WELDON ROSS JR.

F.F.A.	2, 3, 4
Chorus	1
Track	1



BONITA SCHUTTE

Band	1, 2, 3, 4
Band Secretary	3
Clarinet Trio	2
All Conference Band	3
F.H.A.	1, 2, 3, 4
Delegate to F.H.A. State Meeting	1
F.H.A. President	4



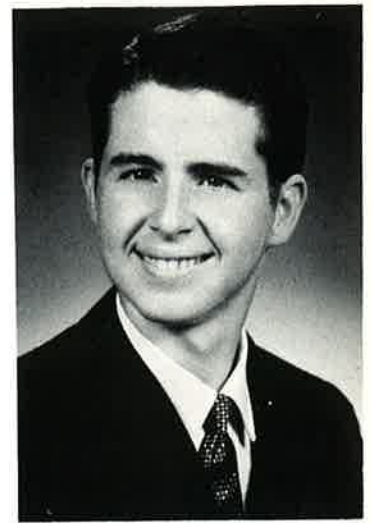
PAT SHEFFIELD

F.H.A.	1, 2, 3, 4
Chorus	1, 2, 3, 4
French Club	3
F.H.A. President	3
F.H.A. Reporter	2
F.H.A. Parliamentarian	4
Vocal Trio	1, 2, 3





BOB SLAUGHTER



STANLEY SMITH

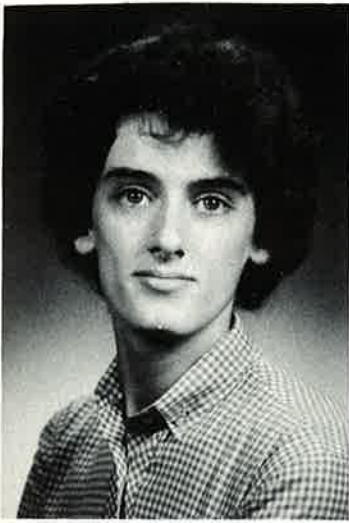
F.F.A. . . . . 2, 3, 4  
Volleyball . . . . . 1



KENNETH STEVENSON

F.F.A. . . . . 2, 3  
Chorus . . . . . 1





JOYCE STRODE

Chorus . . . . . 1, 2, 4



JACK SWAN

Football . . . . . 2, 3, 4  
 Basketball . . . . . 1, 2  
 Track . . . . . 1, 2, 3, 4  
 Band . . . . . 1, 2  
 M. T. Club . . . . . 4  
 President M. T. Club . . . 4  
 Tri-Captain Football . . . 4



LINDA TAPLEY

F. H. A. . . . . 2, 3, 4  
 Cheerleader . . . . . 2, 3, 4  
 Chorus . . . . . 1, 2, 4  
 Barnwarming Candidate . . 2  
 Class Vice-President . . . 2



SANDY TAPLEY

F.H.A. . . . . 2, 3, 4  
 Chorus . . . . . 1, 2, 3, 4  
 Pep Club. . . . . 2, 3, 4



AMYANN UTTERBACK

Band . . . . . 1, 2, 3  
 Homecoming Attendant . . 2  
 Pep Club. . . . . 2, 3, 4  
 French Club . . . . . 3  
 Student Council. . . . . 4  
 Baccalaureate Attendant . . 3



LARRY VOEPEL

F.F.A. . . . . 2, 3, 4  
 Football . . . . . 2, 3  
 Chorus . . . . . 1, 3, 4





# JUNIOR WADDELL

Class Secretary . . . . . 1  
 Basketball . . . . . 1, 2  
 F.F.A. . . . . 2, 3, 4  
 Football . . . . . 4



# DON WALTON

Basketball . . . . . 1, 2, 3, 4  
 Track . . . . . 1, 2, 3, 4  
 Band . . . . . 1, 2, 3, 4  
 M. T. Club . . . . . 3, 4  
 M. T. Club Reporter . . . 3, 4  
 F.F.A. . . . . 2, 3, 4  
 F.F.A. Secretary . . . . 4  
 Class Treasurer . . . . . 2  
 State F.F.A. Camp . . . . 3  
 Annual Salesman . . . . . 4  
 Dance Band . . . . . 3



# HAROLD YAGER

Basketball . . . . . 1, 2, 3, 4  
 Football . . . . . 3, 4  
 Track . . . . . 1, 3, 4  
 M. T. Club . . . . . 3, 4  
 M. T. Club Secretary . . . 4  
 French Club . . . . . 3, 4  
 Student Council . . . . . 4  
 Band . . . . . 2  
 Chorus . . . . . 1  
 Athletic Scholastic Award . 3





KATHIE YOWELL

F.H.A. . . . . 1, 2, 3, 4  
Band . . . . . 1, 2, 3, 4  
Pep Club. . . . . 2, 3



CHARLES SPEGAL



# CLASS WILL

I, Tommy Asquith, will my 20-20 vision to Eddie Asher and my slightly used "54" Ford and 5 gallon of used oil to Gene Sheffield.

I, Jane Bird, being of sound mind do hereby will my place in commerce classes to my sister, Sue, and my place on the annual staff to Loretta Gibbs.

I, Carol Black, do hereby will my upstairs rooms and midnight walks to Kay Betz. To Barb Carroz I will my ability to forget people that belong in the past and my ability to go quail hunting with certain people on Sunday.

I, Goldie Bloomfield, will my seat in shorthand to anybody who is brave enough to take it, and my natural curly hair to anyone who needs it. And my seat in bookkeeping to Jane Ann Alcorn.

I, Mac Boling, being of sound body and weak mind, do hereby will my ability to escape from Center police force to William Oglesby, and my whitewalls to Terry Egbert.

I, Tom Bramblett, will my ability to study to John Walker and my love for M.T.H.S. to anyone who loves it as much as I do.

I, Melvin Brashears, will my place in the Senior clique to Danny Scrogins. To Ronald Elam I leave my height in basketball. I leave my love for "bucket seats" to Linda Fry. To some lucky Junior I leave a certain place in Ralls County that only Wallace Mills and John Moseley were able to find.

I, Ronald Carver, being of square head and round shoulders (due to Mr. Slavin's terribly protracted assignments) do hereby will my position as arbitrator in his classes to Carol Ravenscraft. Good luck, Mr. Slavin.

I, Wayne Chandler, do hereby will my ability to keep quiet in study hall to Gorden Camden and I also will my place in Trig. to Eric Babb and my place in Physics to anybody who will take it and I will my ability to strike out in baseball to Mr. Peters.

I, Jeanie Chipman, will my cheerleading sweater to Linda Fry. My membership to the crack-a-pop club and all my popsicle sticks to the Junior Gang--be careful where you leave the sticks especially watch out for the trailers. To the freshman girls I leave my interest in Steve Jackson. Take care of him.

I, Lynn Clayton, being of sound mind will a pair of wire cutters to Margie and Kay Betz so when they get tangled up in a clover field they won't be getting home late. I also will Lorraine Reynolds my ability to drive and my long hair to Barbara Carroz.

I, John P. Conn, hereby will to Arnold Stead my strange football ability and also my ability to stay at 115 pounds. To Eric Babb I leave my intellectual qualities and to R. L. Jacobs I leave my chair in chemistry.

I, John Crockett, ain't going to will nothing to nobody, because I ain't got enough for myself.

I, Carol Dickensheets, being of sound mind, do hereby will my ability to go with Hannibal boys to Sue Alexander, and my books to my cousin, John. Take good care of them.

I, Larry Dowell, will my books to Bill Leake, being as he loves to study.

I, Richard Elliott, being of sound mind and body, will my ability to strike out Mr. Peters in baseball to Marcus Jackson, I will my ability to get along with Mr. Gray to the Shepherd boys. They need it.

I, Donna Epperson, will my dimples to Gary Dicks and my good posture to my brother, Danny Epperson.

I, Barb Erb, do hereby bequest all my happy times in high school to Barb Carroz - hope you have many Barb. To all the other guys and gals who will trod the halls of ol' M.T. again next year I leave all the fine examples set by this year's seniors.

I, Jim Fisher, will my seat in English, Physics, and Chemistry to anyone who will have them. To Alan Laird, I have an oil burning 215 6 cylinder he might like to replace that Mercury of his.

I, Joyce Ruth Fuqua, being of weak mind will all my fun on the annual staff to Barb Carroz, my ability to throw tin cans to Betty Blackwell, and Barb Carroz, and my place on the student council to any Junior who thinks they deserve it.

I, Junior Gillenwater, will my ability to Do ("nothing") to anybody who wants it and my books to Bill Leake.

I, Leslie Harlow, will my ability to stay out of trouble in Mr. Slavin's seventh period study hall to Donald Strode, and my seat in physics to anyone who wants it.

I, Wallace Hart, will my love and devotion to the X-Flagsters to anyone who will keep up the tradition. I also will to anyone who enjoys a good time my interest in cabin number 3.

I, Jerry Hildebrand, will my (54 Chevy) to my brother Larry, and my ability to keep out of trouble. Also all my classes under Mr. Templeman to anyone who wants them.

I, Neil Jackson, being of sound mind, leave my Ford to any Chevy (shaky) owner in or around Mark Twain. May place in the conference room I leave to the Juniors in hopes they won't get it either. My love for the San Francisco Giants I leave to Mr. Templeman. To the school I just leave.

I, Shirley Jennings, being of sound mind and with the permission of Jane Bird do hereby will all the fun we have had in high school to Sue Bird and Loretta Gibbs and hope they can do it justice, I also will my place on the parking lot to anyone who wants it.

I, Mike Johnson, will my height to my brother, Pat. My athletic ability I leave to Billy Joe Trower and my ability to drive without my lights on to John Roy Chipman and Johnny Mac Liter. Keep practicing Joh Roy.

I, Anna Lee Keithly, will my ability to stay out of P. E. to Vicki Inman, and also my place in chemistry to anyone who is brave enough to take it.

I, Margaret Kosin, do leave my ability to make good grades to my brothers, Larry and Ronnie, and my ability to have fun in P. E. to Polly Price, Cathy Summers, and Ruth Ann Cowden.

I, Alan Laird, being of sound mind will my ability to race 62 Pontiacs to Terry Egbert. I also will my lockable gas cap and drivers license to William Oglesby.

I, Sammy Leake, being of sound mind will my ability to spend more time in Quincy than at home to anyone by the name of Ronnie who has plenty of spare time and a dependable road map. I will my place in WHOS WHO IN THE FLAGSTERS to anyone in Mark Twain High who will promise to keep up my tradition.

I, Joyce Marilyn Love, being of sound mind, do hereby will and bequeath my majorette boots to Connie Watts, and my giggle to any Junior girl who wants it, mainly Mary Lu Egbert.

I, Ann Mahood, will my place in Bookkeeping to Jane Ann Alcorn, My short hair to Janet Huffman, all the fun I had in study hall to my cousin, Curtis Flowers, and my seat on the bus to Beverly Howard.

I, Wallace Mills, will, will, will, will, will, will, will, will, will!

I, John Mosley, being of sound mind, leave my ability to play left end on the football team to Corn Top Noland. To Slezzy English I will my place in the Senior clique.

I, David Mundle, will my sharp car to Delbert Griffin.

I, Sharalyn Noland, do will and bequeath my ability in Physical Education to anyone who wishes to major in it, my place on the annual staff to a Junior, and all the room left for me in my Mercury when it is full of girls to Barb Carroz.

I, Linda Northcutt, being of sound mind, do hereby will my stand in band to Linda Fry, my ability to keep quiet when its necessary to Carol Ravenscraft and all my pop-sicle sticks I most heartedly leave to Barb Carroz in hopes she won't go around leaving them in certain people's trailers.

I, Chester Palmer, will Terry Egbert my ability to pick 'em true and blue. I leave my bucket seats and floor shift to anyone who is going steady and can't stand to be apart. To Lightning Long I will my place in the clique.

I, Georgiann Pianfetti, will my place in physics class to anybody who is dumb enough to take it.

I, Bill Powell, will my excellent attendance record and place in the clique to John Carman. To Sam Fry my football shoes (clean 'em up), my slide rule to John Chipman and John Liter (have fun), the 57 Impala and J/S drag trophies to Elmo-(Mike English gets the grill-Larry Gray "the 9 in. slicks"). My seat in the lounge goes to Mr. Joesting and my overdue books to Mrs. Willis. Freshmen divide the balance.

I, Larry Record, will my chopped and channeled, blown, injected, 32 roadster to anybody who has the imagination to run it and my map to the Utterback house to Curtis Flowers.

I, Phyllis Reynolds, will my height 4'10" to Denny Epperson, and my job in the office to Lorraine Reynolds.

I, Mary Caye Rice, being of sound mind and good disposition, do hereby will my FFA membership card to Jeanne Rowland, my singing ability to "bigboy" Billy Lemon, and four postage stamps to Jean Mudd.

I, Eileene Rohning, being of sound mind, will by ability to watch my actions on Main Street in Perry around midnight to Dori Utterback. I will my poise, what little I have to Carol Sue Ravenscraft. I also will my interest in Center boys to Pat Walton.

I, Weldon Ross, will my ability to be a good driver at the drive-in to anyone that wants it, also will my ability to pass a car going up a hill doing 90 miles an hour on a curve with a trailer truck coming.

I, Bonita Schutte, will my chair in Band to Ruth Ann Cowden and my FHA gavel to Linda Fry. Also my place in bookkeeping to anyone who wants it.

I, Patricia Sheffield, hereby will my place in chorus to anyone who likes to sing.

I, Bob Slaughter, will my various abilities to anyone foolish enough to take them.

I, Stanley Smith, being of sound mind (I think) will my (Hot 56 Chev.) to Johnny Mac Liter, and I will all of the Hannibal girls to Mike English.



I, Kenneth Stevenson, being of sound mind do will my car "Clyde" to Terry Egbert, my customizing ability to Mike Leake and Mike Dudding. Use it well. And to William Oglesby I leave my spare gas can; don't lend it out.

I, Joyce Strode, will to my brother Don, the ability to make good grades in hopes that he will use it.

I, Jack Swan, will my ability to play football to anyone who is silly enough to want it. I will my place in the senior clique to Mike English.

I, Linda Tapley, do hereby will my cheerleading outfit to Charlotte Dotson in hopes she will put it to good use. I also will my love for bunking parties at C. B. L. to my cousin, Charlotte Dotson, and Barbara Carroz. YEAH! Enjoy the lake girls.

I, Sandy Tapley, do hereby will my study habits to J. C. Kerley in hopes he makes better use of them than I did. To Dorothea Miller I leave my great love for P.E. Ugh!

I, Amyann Utterback, will my ability in P.E. to Carla Harlow, my ability to have pencils to Mickey Inman, my ability to flunk tests to Cathy Allen, and my ability to get along with my sister and my room at home to Sharon Lewellen.

I, Larry Voepel, being of sound mind and body do hereby will my speediness in touch-football, my ability to keep out of trouble and six blown fuel injectors to Bobby Hufford, who needs all three. I also will my "58 Ford" to Mr. Peters so he can drive a lively car for a change.

I, Junior Waddell, leave my hot plymouth to Terry Egbert and my hair-do to Larry Hildebrand.

I, Don Walton, will my ability at playing the cornet to John Glascock and what ability I have in track to my cousin Mike Wasson. To Tony Kaiser and Eddie Broemmer, I will my interest in one blonde headed girl, who lives in Center. To Curtis Flowers I will a certain darkheaded girl from Perry.

I, Harold Yager, will my football and basketball abilities to Larry Ledbetter and my ability to get good grades without studying to my brother.

I, Kathie Yowell, will my height to Brenda Bowling, my good grades to my brother, and my books to anyone who likes school enough to use them.

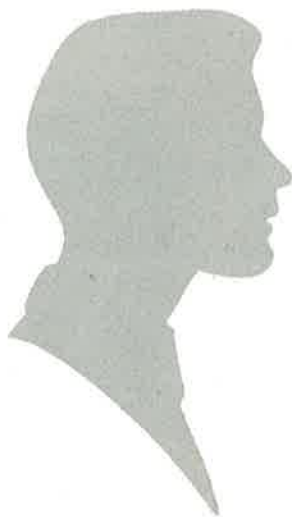
I, Jim Berry, will my ability to steal Freshman pencils to all the Seniors next year.

I, Betty Burns, being of sound mind (debatable) do hereby will my ability to discover new dances to Betty Ann Blackwell, and my ability to stay on the cheerleading team to Dorthea Miller.

# ELECTION RESULTS

	Boy	Girl
Most Popular	John Crockett	Eileene Rohning
Most Likely to Succeed	Ronald Carver	Margaret Kosin
Most Courteous	Ronald Carver	Margaret Kosin
Most Talkative	Mike Johnson	Jeannie Chipman
Most Independent	Bill Powell	Joyce Strode
Best Athlete	Wallace Mills	Sharalyn Noland
Neatest Dresser	Chester Palmer	Eileene Rohning
Prettiest Eyes	Bill Powell	Carol Black
Tallest	Melvin Brashears	Joyce Strode
Shortest	Charles Spegal	Phyllis Reynolds
Laziest	John Moseley	Lynn Clayton
Peppiest	John Crockett	Betty Burns
Friendliest	Mike Johnson	Barbara Erb
Prettiest Hair	Chester Palmer	Lynn Clayton
Biggest Wolf	Stanley Smith	
Best Physique	Mac Boling	
Wisecracker	Bill Powell	Phyllis Reynolds
Best Figure		Eileene Rohning
Biggest Flirt		Betty Burns
Giggliest Giggler		Joyce Love

# JUNIORS



# JUNIORS UNDERCLASSMEN

President

Vice-President

Secretary

Treasurer



Mike  
English



Johnnie  
Mac Liter



Jean  
Mudd



Delores  
Deverman



Benny  
Akers



Marva  
Allison



Cathy  
Allen



Joyce  
Alexander



Eric  
Babb



Karen  
Basnett



Donna  
Belshe



Janet  
Billings



Teddy  
Broemmer



Gorden  
Camden



Ruthie  
Campbell



John  
Carman



Barbara  
Carroz



Jerry  
Cernea



John  
Chipman



Barbara  
Chirnside



Frankie  
Clark



Margie  
Clayton



Stanford  
Cole



Connie  
Cragen



# JUNIORS



John  
Dickensheets



Gary  
Dicks



Charolette  
Dotson



Mary Lu  
Egbert



Terry  
Egbert



Steve  
English



Dennie  
Epperson



Mary  
Ford



Linda  
Fry



Mary Jane  
Gingry



Delbert  
Griffen



Tammy  
Harris



Gary  
Hartman



Eileen  
Harty



Gene  
Hicklin



Larry  
Hildebrand



Connie  
Hill



Julie  
Hultgren



Janet  
Huffman



Linda  
Inlow



Marcus  
Jackson



Mary Ann  
Johnson



Bobby  
Jones



Billy  
Kaufman

# JUNIORS



J. C.  
Kerley



Jerry  
Ketsenberg



Larry  
Kosin



Beverly  
LaRue



Lawrence  
Leake



Larry  
Ledbetter



Sharon  
Ledford



Sandra  
Luckett



Dorothea  
Miller



Regina  
Moss



Joann  
Mudd



George  
Norman



William  
Oglesby



John  
Palmer



Lana  
Porter



Carol  
Ravenscraft



Judy  
Ray



Ann  
Ross



Claudia  
Ross



Jean Ann  
Rowland



Danny  
Scrogin



Gene  
Sheffield



Mildred  
Silvey



Alice  
Smallwood

# JUNIORS



Carole  
Smith



Virginia  
Smith



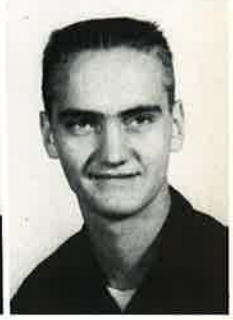
Donnie  
Strode



Janice  
Stuart



Danny  
Summers



John  
Walker



Ruth Ann  
Whelan



Vicki  
Fuqua

Not  
Pictured:

Flossie  
Ames

Thomas  
Oaks

Russell  
Osterhout

Bill  
Trower

# SOPHOMORES





# SOPHOMORES

President Vice-President Secretary-Treasurer



Robert  
Ross



Don  
Brashears



Kathy  
Gough



Jane  
Alcorn



Ellen  
Alexander



Sue  
Alexander



Eddie  
Asher



Rhoda  
Bailey



Kay  
Betz



Albert  
Black



Betty Ann  
Blackwell



Billy  
Blessing



Dee Ann  
Bogue



Brenda  
Bowling



Gary  
Brinker



Terry  
Clarke



Bill  
Clary



Elaine  
Cole



Vivian  
Cornelius



Larry  
Cowden



Linda  
Cragen



Freddie  
Davis



Freddie  
Day



Ronnie  
Elam

# SOPHOMORES



Judy  
Fisher



Tommy  
Flowerree



James  
Fuqua



Tonda  
Gann



Linda  
Gingry



John  
Glascock



Paul  
Gollaher



Dwayne  
Goss



Larry  
Gray



Janet  
Griffith



Carla Rae  
Harlow



Sharon  
Harlow



Phyllis  
Harty



Eva Kay  
Hawkins



Kathy  
Hayes



Karen  
Hess



Richard  
Hill



Dorothy  
Howard



Bobby  
Huford



Vicki  
Inman



Beverly  
Jackson



R. L.  
Jacobs



Dickie  
Johnson



Mike  
Leake



# SOPHOMORES



Bill  
Leake



Bill  
Lemon



Darryl  
Levings



Sharon  
Lewellen



Connie  
Lieurance



Larry  
Long



Iva Jane  
McAdams



Jackie  
Moore



Donnie  
Morris



Gerald  
Noland



Billy  
Perkins



Marilyn  
Powell



Lorraine  
Reynolds



Doris  
Ross



Charles  
Silvey



Margaret Ann  
Six



Anna Mae  
St. Clair



Arnold  
Stead



Chris  
Stroud



Connie  
Stuart



Larry  
Swank



Clarence  
Thurman



Robert  
Tobin



Rickie  
Tredway

# SOPHOMORES



Nancy  
Utterback



Gloria  
Vaughn



Dianna  
Walton



Pat  
Walton



Connie  
Watts



Mae  
Wheeler



Marshall  
Whitaker



Harrison  
White



Winnie  
White



Karl  
Wichern



Mary  
Woodhurst



Wes  
Woollen



David  
Yager



Joe  
Yowell

Not  
Pictured: Rita  
Whelan



# FRESHMEN



# FRESHMEN

President

Vice-President

Secretary

Treasurer



Woody  
Moore



Jim  
Fry



Ann  
Morris



Jane  
Alexander



Larry  
Abbey



Yvonne  
Bailey



Edwin  
Ballenger



Judy  
Billings



Janet  
Bird



Diana  
Bowling



Kathlyn  
Bramblett



Eddie  
Broemmer



Judy  
Carter



Janice  
Chirnside



Lee  
Clark



Phillip  
Conner



Ruth Ann  
Cowden



Willa  
Cragen



John  
Croll



Fay  
Davis



Mike  
Dudding



Allen  
Ebers



Wayne  
Ehret



Gerald  
Elliott

# FRESHMEN



Roy Lee  
Epperson



Curtis  
Flowers



Pat  
Ford



Jim  
Franklin



Loretta  
Gibbs



Bill  
Harris



Jolene  
Hart



Jack  
Harty



Peggy  
Hayes



Bill  
Hess



Jim  
Hickman



Bert  
Howard



Beverly  
Howard



Mary Jo  
Hulse



Mickey  
Inman



Janna  
Itschner



Steve  
Jackson



Pat  
Johnson



Billy  
Jones



Tony  
Kaiser



Gary  
Klawonn



Ronnie  
Kosin



Billy  
Kuda



Eldon  
Larsor



# FRESHMEN



David  
Leake



Billy  
Ledford



Barbara  
Luckett



Raymond  
Lynn



Sammie  
Mahood



Mark  
McCrady



Kathy  
Moss



Billy  
Nutt



Richard  
O'Brien



Trudy  
O'Conner



Carolyn  
Parrish



Mike  
Parsons



Leon  
Perkins



Richard  
Poyser



Polly  
Price



Paula  
Quilling



Neva  
Reeves



David  
Rhoades



Rudy  
Rhodes



Calvin  
Robinson



Bobby  
Rouse



Judy  
Schutz



Eddie  
Scrogin



Mike  
Sheffield



# FRESHMEN



Johnny  
Shepherd



Lonnie  
Shepherd



Paulette  
Silvey



Charles  
Smith



Eddie  
Smith



Harry  
Smith



Nada  
Smith



Linda  
Stuart



Cathy  
Summers



Peggy  
Swank



Randy  
Trower



Gary  
Vaughn



Stanley  
Walkley



Mike  
Wasson



John  
Whaley



J. D.  
Whelan



Alan  
Wolfe



William  
Yager

Not  
Pictured:

George  
Jones

# SPORTS



# FOOTBALL



ROW ONE: G. Dicks, A. Stead, T. Egbert, J. Swan, J. Moseley, W. Mills, M. Brashears, L. Hildebrand, H. Yager. ROW TWO: B. Powell, G. Noland, B. Ross, D. Brashears, M. Whitaker, S. Jackson, S. Fry, D. Scrogin, L. Grey, L. Record. ROW THREE: R. Hill, C. Stroud, G. Brinker, A. Black, M. McCrady, B. Blessing, G. Klawonn, W. Moore, E. Balinger. ROW FOUR: Mr. Reynolds, E. Asher, B. Clary, J. Croll, R. Trower, B. Leake, L. Cowden, B. Harris, W. Yager, D. Levings, Mr. Moss.

Another rough year, but I firmly believe progress was made with one victory in both "A" and "B" squads and two very close games against McCooey and Hannibal Junior Varsity. Our season's record could have easily read 3-6 instead of 1-8.

Football is not an easy game to learn and I feel that our boys learned the offensive part of the game fine, and the defense is something that you must have within you that just refuses to let the other team move that ball. This takes time. I think it is gradually developing here at Mark Twain.

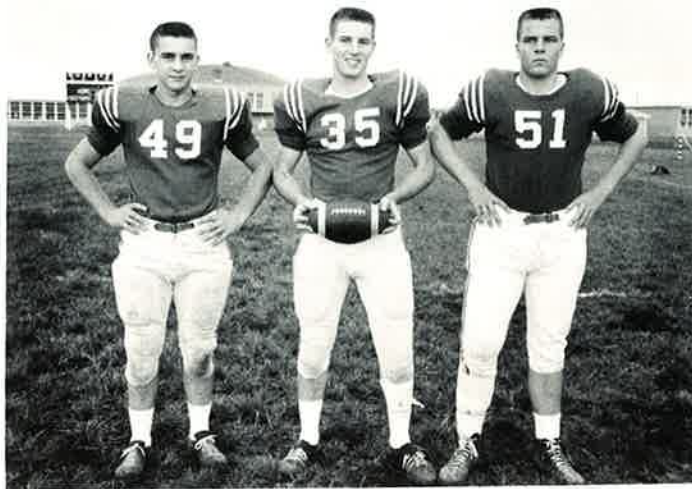
As always I enjoyed working with the boys and believe that each year the squad will develop more fully into a good all around ball team.

*Lee Moss*



ROW ONE: T. Egbert, H. Yager, L. Hildebrand, A. Stead, L. Record, B. Powell. ROW TWO: W. Mills, D. Scrogin, M. Brashears, J. Moseley, J. Swan, G. Dicks.

## A TEAM TRI-CAPTAINS



Terry Egbert, Wallace Mills, Jack Swan.



WALLACE MILLS  
Halfback



JACK SWAN  
Center



LARRY RECORD  
Guard





BILL POWELL  
Right End



LARRY HILDEBRAND  
Tackle



TERRY EGBERT  
Half-Back



JOHN MOSELEY  
Left End



MELVIN BRASHEARS  
Quarter-Back



GARY DICKS  
Full-Back



HAROLD YAGER  
Right Guard



DANNY SCROGIN  
Full-Back



ARNOLD STEAD  
Left-Tackle

## B TEAM



ROW ONE: D. Brashears, J. Croll, L. Grey, S. Jackson, S. Fry, W. Yager, E. Ballinger. ROW TWO: Mr. Moss, G. Brinker, A. Black, M. Whitaker, M. McCrady, B. Blessing, G. Klawonn, W. Moore. ROW THREE: R. Hill, C. Stroud, G. Noland, B. Ross, B. Harris, R. Trower, B. Leake, L. Cowden.

## B TEAM TRI-CAPTAINS



Bob Ross, Don Brashears, Gerald Noland.

# BASKETBALL



A TEAM--ROW ONE: C. Stroud, M. Johnson, C. Palmer, W. Mills, J. Crockett, M. Brashears, P. Johnson. ROW TWO: B. Powell, D. Walton, G. Dicks, Mr. Reynolds, H. Yager, D. Scrogin, S. Cole.

During the 1962-63 Basketball season the Coaching staff feels as though each boy has done his level best to bring a fine season to Mark Twain. As coach, it is needless for me to say how profoundly proud I am of this years Tiger's Team. The hustling spirit the boys held to win for Mark Twain, was again tremendous.

I can only hope that we were as successful in teaching the many, many concomitant learnings that go into a sport such as this as we were in teaching the skill itself.

*Coach Reynolds*

Mark Twain	78	McCooey	38	Mark Twain	85	Shelbina	66
Mark Twain	50	Community	40	Mark Twain	56	Monroe City	59
Mark Twain	59	Palmyra	48	Mark Twain	50	Ellsberry	60
Mark Twain	58	Louisiana	55	Mark Twain	62	McCooey	53
Mark Twain	60	La Grange	48	Mark Twain	84	Louisiana	55
Mark Twain	71	Monroe City	66	Mark Twain	65	Community	47
Mark Twain	62	Shelbina	47	Mark Twain	57	Van. Far.	64
Mark Twain	86	Centralia	51	Mark Twain	71	Centralia	49
Mark Twain	62	Montgomery City	58	Mark Twain	56	Palmyra	49

## Centralia Tournament 3rd

Mark Twain	59	Madison	51
Mark Twain	44	Ashland	46
Mark Twain	65	Hallsville	42

## Louisiana Tournament 2nd

Mark Twain	60	Van. Far.	56
Mark Twain	80	Winfield	41
Mark Twain	65	Warrenton	76

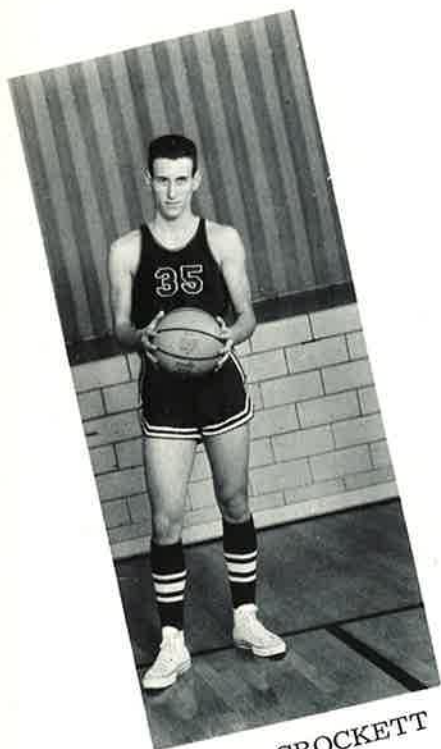
## Bowling Green Tournament 2nd

Mark Twain	68	Van. Far.	47
Mark Twain	56	Washington	52
Mark Twain	50	Clapton	64

## State Regional 3rd

Mark Twain	67	Centralia	42
Mark Twain	48	Palmyra	40
Mark Twain	54	Clopton	65
Mark Twain	66	Warrenton	59





JOHN CROCKETT



WALLACE MILLS



CHESTER PALMER



MIKE JOHNSON



MELVIN BRASHEARS



BILL POWELL





DON WALTON



HAROLD YAGER



DANNY SCROGIN



STANFORD COLE



COACH REYNOLDS



GARY DICKS

## B TEAM



ROW ONE: L. Long, J. Croll, S. Fry, S. Jackson, D. Brashears.  
ROW TWO: W. Yager, W. Moore, B. Lemon, J. Moore, J. Harty, E. Scrogin, M. Wasson, B. Ledford.

## C TEAM

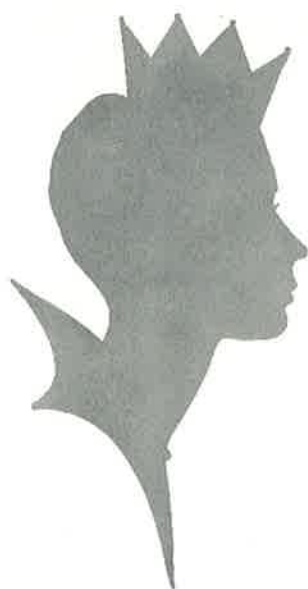
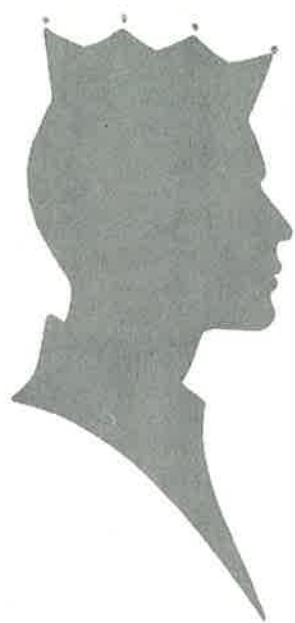


ROW ONE: B. Blessing, B. Clary, J. Glascock, G. Klawonn, C. Flowers, G. Noland, ROW TWO: Mr. Moss, J. Hickman, B. Ross, A. Black, M. McCrady, B. Jones, C. Smith, B. Harris.



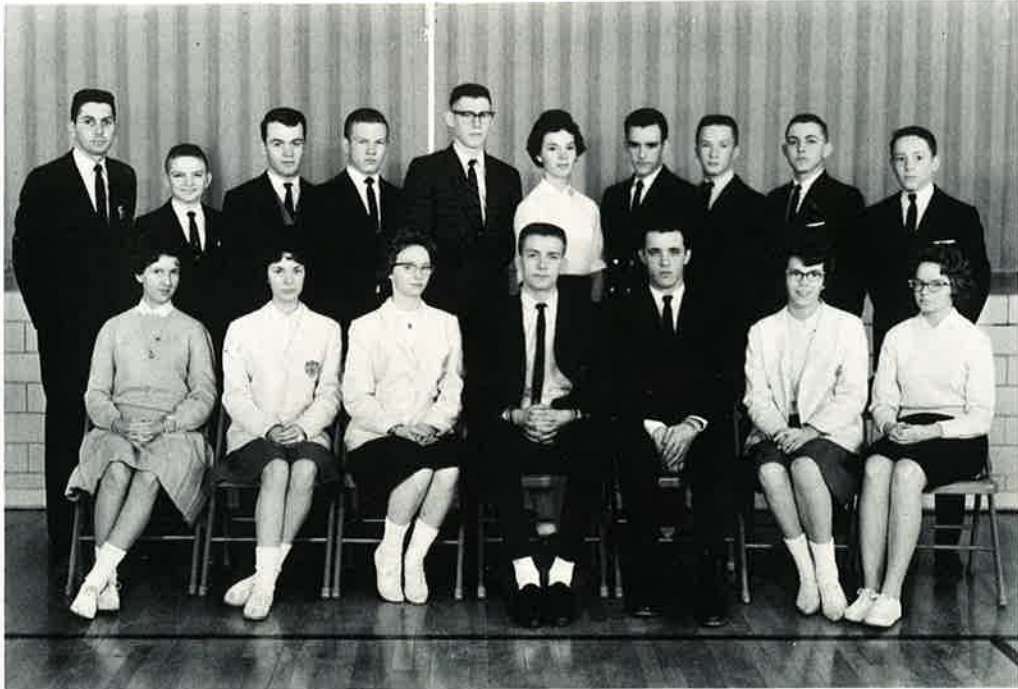


# ACTIVITIES





# STUDENT COUNCIL



ROW ONE: A. Utterback, J. Mudd, J. Fuqua, M. Brashears, S. English, English, J. Mudd, D. Howard. ROW TWO: Mr. Joesting, B. Clary, M. English, J. Palmer, H. Yager, P. Quilling, C. Palmer, J. Croll, W. Moore, B. Ross.

The Student Council is an organization representing the students of Mark Twain High School. The purpose is to carry out those ideas that make our school better. It promotes a greater spirit of democracy among the students.

The organization is composed of 16 members. The president and secretary are chosen from the senior class. The vice-president and treasurer are chosen from the junior class. It represents two representatives from each class and the president of each class.

Mr. Joesting and Mrs. Fanning are the sponsors.

# CHEERLEADERS



Linda Tapley



Mary Jo Hulse



Trudy O'Connor



Connie Watts



Barbara Carroz



Sharon Lewellen



Jeanie Chipman



Dorothea Miller

# PEP CLUB



ROW ONE: C. Watts, M. Hulse, D. Miller, B. Carroz, S. Lewellen, T. O'Connor, L. Tapley, J. Chipman. ROW TWO: J. Love, J. Mudd, B. Erb, C. Ravenscraft, C. Allen, V. Fuqua, L. Fry, A. Ross, J. Itschner, M. Johnson, Mrs. Reker. ROW THREE: M. Rice, A. Utterback, D. Deverman, K. Moss, D. Belshe, T. Harris, P. Price, L. Gingry, C. Cragen, M. Gingry, J. Mudd, P. Hayes, L. Stuart, K. Gough, S. Bird. ROW FOUR: D. Utterback, M. Six, P. Walton, L. Inlow, M. Clayton, C. Harlow, S. Noland, K. Hayes, D. Howard, C. Hill, S. Tapley, L. Reynolds, B. LaRue, R. Moss. ROW FIVE: F. Davis, K. Betz, C. Dotson, T. Gann, B. Blackwell, L. Northcutt, E. Rohning, J. Rowland, J. Stuart.

The Pep Squad is an organization of about sixty girls from the freshman, sophomore, junior, and senior classes, to help the cheerleaders cheer the boys onto victory in any sport in which they participate.

This organization was formed about three years ago, but this is the first year we have won a trophy. This trophy was awarded to the "best pep-squad" participating in the 38th Annual Bowling Green Tournament. They awarded this trophy on team support, neatness, timing, politeness, and sportsmanship.

The Pep Squad is very proud of the trophy and we hope that it may be possible to receive this trophy in the years to come.



# BAND



ROW ONE: V. Fuqua, J. Rowland, M. Rice, C. Allen, L. Clayton, J. Love, S. Ledford. ROW TWO: Mr. Green, M. Six, D. Utterback, K. Yowell, C. Summers, M. Hulse, B. Ledford, B. Erb, J. Chipman, C. Ravenscraft, P. Price. ROW THREE: T. O'Connor, C. Watts, B. Akers, B. Schutte, R. Cowden, K. Bramblett, M. Brashears, B. Lemon, D. Walton, A. Black, J. Glascock, P. Johnson. ROW FOUR: B. Blessing, M. Clayton, S. Jackson, W. Woollen, B. Blackwell, S. Cole, D. Brashears, M. Johnson, L. Fry, L. Northcutt, P. Hayes, G. Hicklin.

The Mark Twain Band is a performing organization of forty-three members which, as the year draws to a close, has been before the public on nearly a dozen occasions. The band has functioned both as a marching unit (in such events as M. U. 's "Band Day", the Hannibal Marching Band Festival, and football shows); and as a concert organization (in performances at the high school, and in the surrounding area.)

Each performance represents many hours of effort on the part of each member, both in and out of school. In this, we have learned that is it only through hard work as a unit that true unity of purpose can be attained; and that if, through our performance of music both classical and popular, a greater love of all music has been stimulated in ourselves and our audiences, our purpose is indeed well served.

# MAJORETTES



V. Fuqua, J. Rowland, M. Rice, C. Allen, L. Clayton, J. Love, S. Ledford.



Vicki Fuqua



Cathy Allen  
Drum Major



Sharon Ledford

Joyce Love



Lynn Clayton



Mary Caye Rice



Jean Rowland





# CHORUS



ROW ONE: L. McIntire, K. Moss, J. Chirnside, V. Smith, L. Inlow, P. Walton, S. Alexander, C. Lieurance, L. Stuart, D. Boling, M. Hulse, P. Ford, M. Powell, C. Smith. ROW TWO: Mrs. Lanning, B. Howard, E. Harty, J. Fuqua, B. Carroz, C. Dotson, E. Alexander, D. Howard, T. Gann, S. Harlow, M. Allison, S. Bird, C. Ross, G. Vaughn, M. Rice, J. Hultgren, S. Ledford, M. Woodhurst. ROW THREE: L. Gibbs, C. Summers, P. Quilling, J. Strode, L. Cragen, K. Bramblett, V. Cornelius, D. Epperson, D. Bogue, I. MacAdams, C. Stuart, S. Luckett, A. Keithly, M. Kosin, R. Cowden, P. Price, J. Billings, F. Davis, L. Tapley. ROW FOUR: N. Reeves, R. Whelan, D. Miller, K. Betz, B. Boling, R. Bailey, K. Gough, W. White, F. Clark, L. Porter, J. Alexander, C. Dickensheets, P. Sheffield, L. Reynolds, C. Watts, P. Silvey, C. Hill, S. Tapley, A. Ross, A. St. Clair. ROW FIVE: J. Fuqua, G. Hartman, T. Flowerree, J. Conn, M. Boling, M. Dudding, B. Hess, M. McCrady, R. Hill, S. English, G. Hicklin, D. Mundle, L. Harlow, B. Lemon, C. Thurman, D. Yager, M. Sheffield, A. Ebers, L. Voepel, T. Egbert, S. Cole, J. Dickensheets, R. Epperson, C. Spegal.

The Mark Twain High School Chorus composed of 94 members has presented five major concerts during the 1962-1963 school year. Small groups and individuals have also appeared for various civic organizations as well as for the school's social activities.





ROW ONE: M. Boling, J. Ketensburg, G. Noland, W. Woollen, M. English, S. Cole, J. Liter, D. Walton, G. Brinker. ROW TWO: C. Spegal, S. Fry, C. Stroud, L. Voepel, S. Mahood, G. Elliot, B. Kuda, J. Dickensheets, F. Day, J. Chipman, A. Ebers, B. Harris, Mr. Wenneker. ROW THREE: W. Ehret, D. Yager, T. Flowerree, D. Johnson, D. Scrogin, B. Rouse, W. Ross, B. Lemon, G. Camden, S. English, E. Balinger, C. Palmer, J. Waddell, A. Wolfe. ROW FOUR: J. Franklin, D. O'Brien, E. Smith, W. Hart, A. Laird, D. Mudnel, L. Clark, S. Smith, L. Kosin, L. Leake, C. Flowers, T. Kaiser, J. D. Whelan, E. Broemmer. ROW FIVE: T. Broemmer, E. Larson, B. Hess, B. Hufford, B. Leake, C. Silvey, T. Clarke.

Four years ago when our new school was built, the Mark Twain F F A Chapter was organized from smaller chapters. Since reorganization, the Mark Twain Chapter has received Superior Chapter Award, there years running.

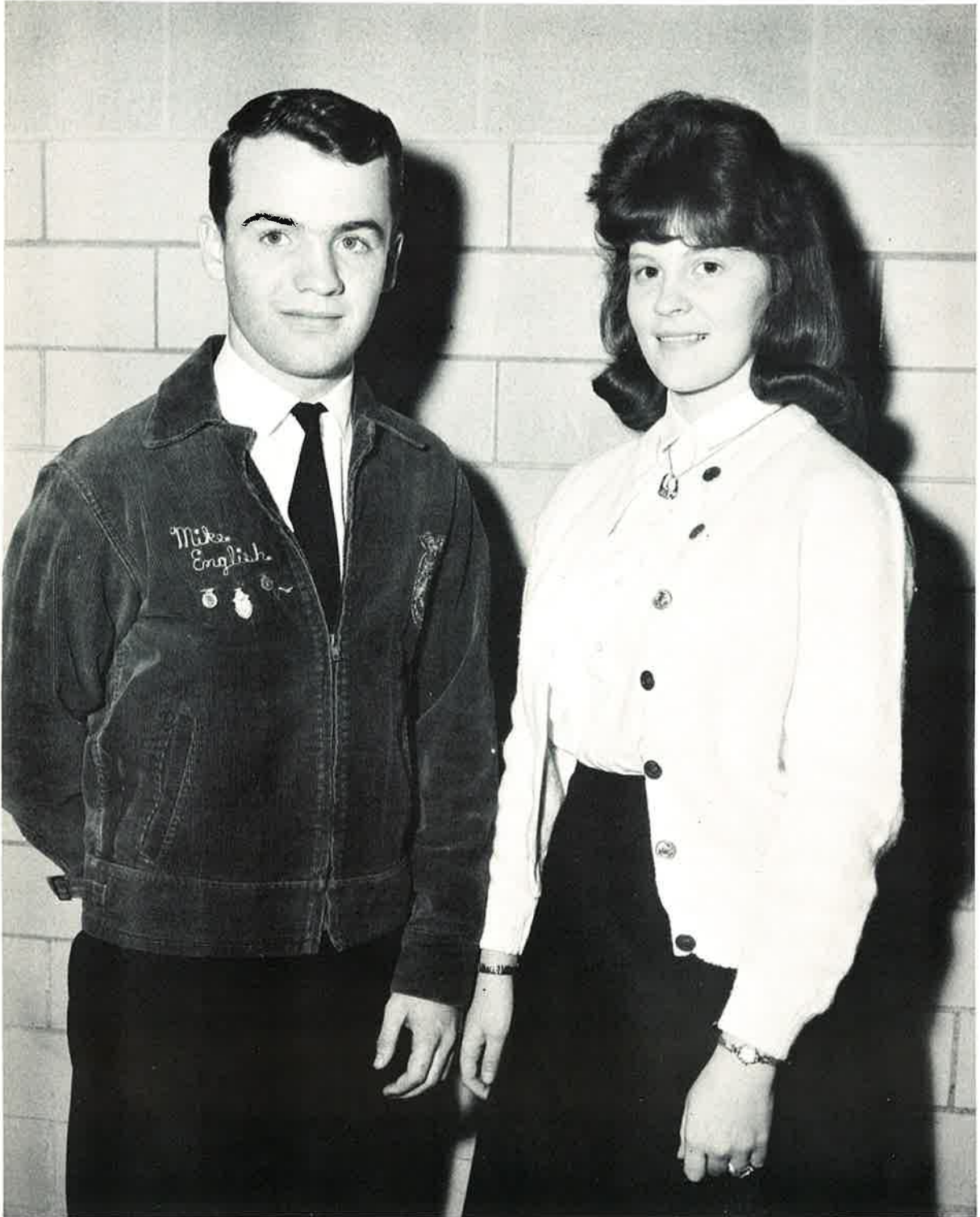
In 1960 the Mark Twain F F A Chapter won a Wildlife Conservation Award for establishing and maintaining wildlife plots.

The current membership of our chapter is 68 with 10 of these members out of school. In the past four years several members achieved the degree of state farmer, and one member was named Star State Farmer.

Every year our chapter sends boys to judging contests and the American Royal.

# CHAPTER SWEETHEART

## BARNWARMING KING



MIKE ENGLISH

EILEENE ROHNING





# FHA



ROW ONE: P. Sheffield, S. Lewellen, L. Fry, C. Allen, B. Schutte, L. Northcutt, C. Ravenscraft, B. Carroz, L. Cragen. ROW TWO: Mrs. Fishback, J. Love, C. Black, D. Utterback, M. Six, V. Fuqua, D. Miller, S. Bird, R. Campbell, M. Hulse, B. Boling, R. Bailey, J. Johnson, T. O'Connor, A. Ross, L. Tapley, S. Tapley. ROW THREE: J. Alexander, V. Smith, V. Cornelius, P. Walton, G. Bloomfield, C. Hill, W. Cragen, K. Moss, B. Chirnside, L. Porter, S. Jennings, J. Fuqua, J. Bird, K. Gough, W. White, S. Harlow, J. Alexander, C. Watts. ROW FOUR: B. Erb, S. Ledford, C. Ross, L. Gibbs, G. Vaughn, P. Quilling, C. Summers, R. Cowden, C. Stuart, E. Cole, K. Yowell, D. Epperson, B. Blackwell, T. Gann, P. Price, D. Belshe, J. Rowland, J. Stuart, D. Deverman. ROW FIVE: L. Clayton, M. Rice, E. Rohning, J. Chipman, R. Moss, B. LaRue, C. Dotson.

The F H A Chapter is an organization of girls who work together with one another as a group to encourage good relationships with the organization and the community, to provide group activity, and encourage fuller interest in Home Economics.



# VALENTINE DANCE



# SPEECH DEPARTMENT



**BARBARA CHIRNSIDE**

Winner of American Legion Oratorical Contest  
November 15, 1962

# A TEAM LETTERMAN



ROW ONE: J. Moseley, D. Walton, M. Johnson, B. Powell, J. Crockett, J. Swan, T. Egbert, L. Voepel. ROW TWO: Mr. Moss, G. Dicks, L. Hildebrand, L. Record, H. Yager, M. Brashears, W. Mills, C. Palmer, Mr. Reynolds.

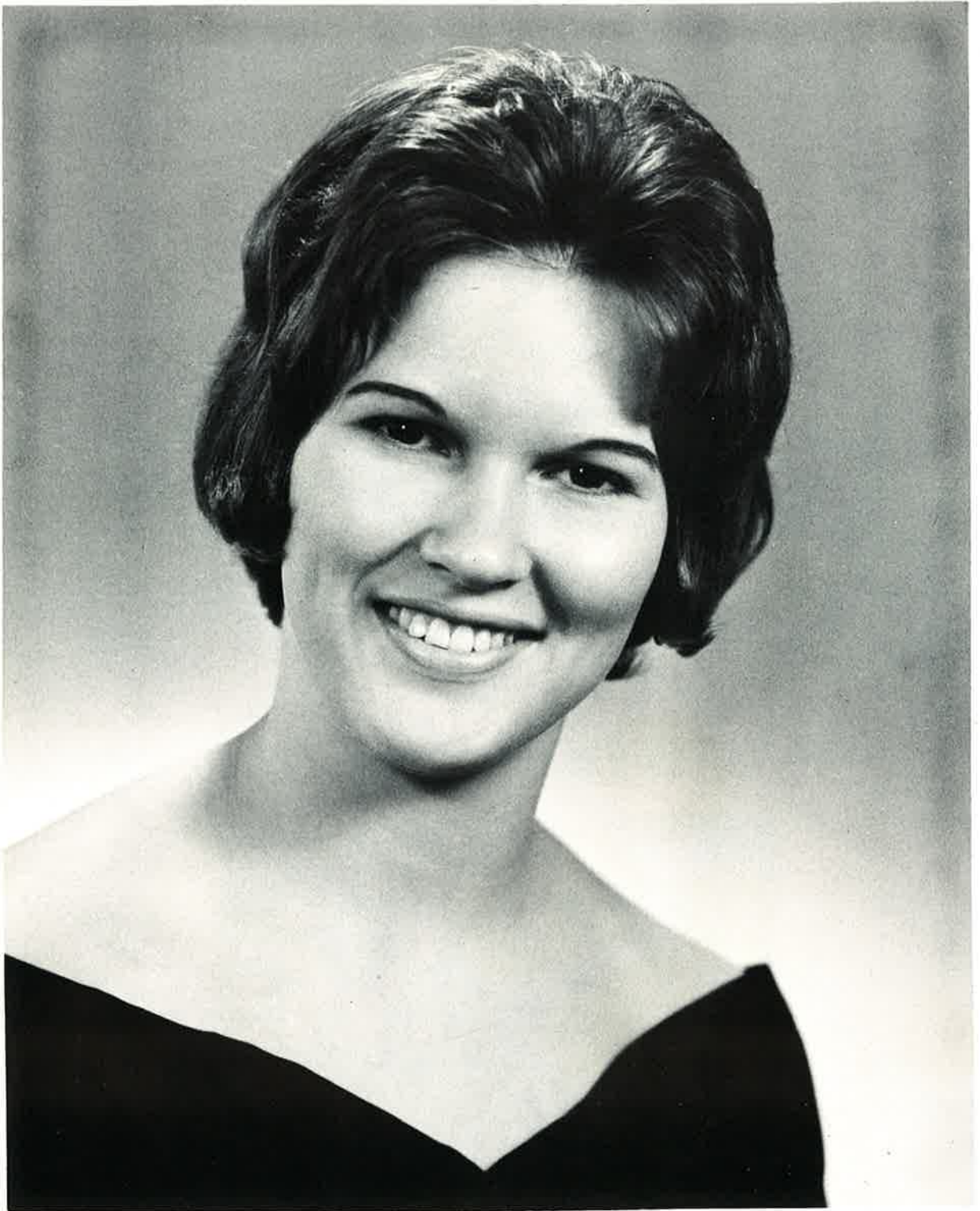
## LETTERMAN OFFICERS



LEFT TO RIGHT: H. Yager, Treasurer; J. Swan, President; M. Johnson, Vice-President; D. Walton, Secretary.



# HOMECOMING QUEEN



DELORES DEVERMAN



# HOMECOMING ATTENDANTS

LINDA FRY  
First Attendant



EILEENE ROHNING  
Second Attendant



# LIBRARIANS



ROW ONE: B. Blessing, D. Walton, B. Schutte, A. Ross, B. Erb.  
ROW TWO: C. Smith, J. Strode, Mrs. Willis, J. Hultgren, A. Mahood.

# DRESS UP DAY



ROW ONE: J. Alexander, G. Vaughn, P. Ames, M. Rice, R. Carver. ROW TWO: J. Yowell, B. Rouse, D. Scrogin.

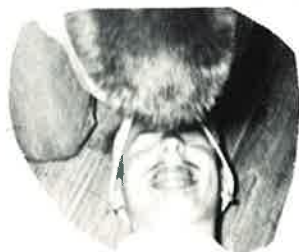


HUMOR



















Don,  
To one of  
the most brilliant  
basketball players at  
M.T.H.S. Don't forget all the  
games we lost and the few we  
won. Stick with hard and your  
shut-pump, and keep those cut dimples.

Love ya,  
Steve

Little Brother,  
The greatest guy  
in the sophomore class  
you're a real swell guy  
to take all the teasing  
I give you. Remember all  
the good times we have had  
in Algebra class. The best  
of luck to you and the  
girls. I'd be happy if you  
were acquainted with the girls.  
They aren't as bad as you  
may think.

a friend always,  
"Big Sis"

Don  
Best of Luck  
To one of my best friends.  
Remember all of the fun we've  
had in bond, football & everywhere  
else & also remember all of the fun  
we're going to have over next 2  
years at M.T.S. It's been swell  
knowing you though & don't forget  
it sometimes I guess.

Good Luck Always  
"Wes"

Don  
To a real good friend.  
Best of Luck  
Bill M.  
Clary



Don,

To the sharpest guy  
in the sophomore class  
in my god de algebra &  
trig. Good luck always  
in your future in geometry.  
Don 6-2-62

Don,  
To a really  
neat guy who has  
a lot of personality.  
Good and smart. Just  
ing with those girls.  
Love ya,  
Cathy

Don,  
To one of the sharpest  
guys in the sophomore  
class. Always remember  
A.A. class. Best of  
luck in the future,  
Junior buddy,  
Mary Ann

Don  
To the sharpest  
guy in the sophomore  
class, and am algebra  
buddy. I really do  
like to play basketball  
at your house!!  
I hope you have a lot  
of fun in your  
high school. Friends forever  
John

Don.  
To an old Algebra  
buddy & the best  
basketball player except  
for 4 others.  
Albert

Don,  
You're a perfect  
Personality. Best  
of luck to a real pal.  
John  
Zimmerman





INTER-COLLEGIATE PRESS

Kansas City — Winnipeg

Publishers — Manufacturers

Yearbooks — Yearbook Covers

Diplomas — Graduation Announcements

USA







